

The velvet spiders: an atlas of the Eresidae
Electronic Supplementary Documents

Jeremy A. Miller ^{1,2}, Charles E. Griswold ², Nikolaj Scharff ^{3,4}, Milan Řezáč ⁵, Tamás Szűts ², Mohammad Marharbai ⁶

1 Department of Terrestrial Zoology, Netherlands Centre for Biodiversity Naturalis, Postbus 9517
2300RA Leiden, The Netherlands

2 Department of Entomology, California Academy of Sciences, 55 Music Concourse Drive, Golden Gate
Park, San Francisco, California 94118, USA

3 Department of Entomology, Zoological Museum, University of Copenhagen, Universitetsparken 15,
2100, Copenhagen, Denmark

4 Center for Macroecology, Evolution and Climate, Department of Biology, University of Copenhagen,
Universitetsparken 15, 2100 Copenhagen, Denmark

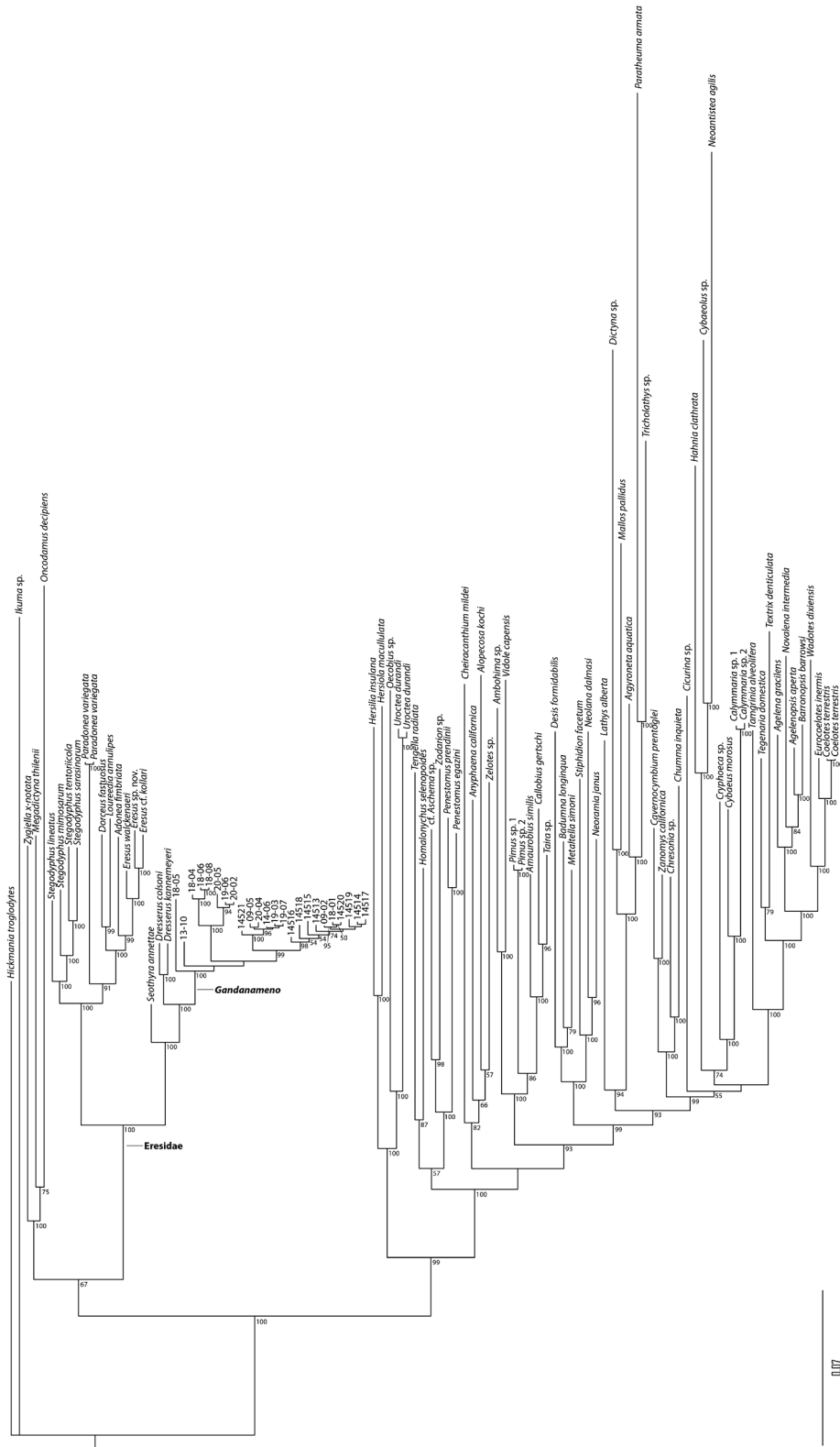
5 Department of Entomology, Crop Research Institute, Drnovská 507, CZ – 161 06 Prague 6 – Ruzyně,
Czechia

6 Department of Biology and Integrated Bioscience Program, University of Akron, Akron, Ohio 44325-
3908, USA

Figure S1. Bayesian phylogenetic tree

Figure S2. Photographs of copulatory organs from *Gandanameno* specimens used in molecular
phylogenetic analysis.

Figure S3. Photographs of copulatory organs from *Gandanameno* specimens used in molecular
phylogenetic analysis.



0.07

Figure S1. Full Bayesian phylogenetic tree including the spider family Eresidae and outgroups based on mixed model analysis (eight data partitions, manually adjusted alignment). Branches drawn proportional to change. Numbers at nodes are percent posterior probabilities of 50 or greater. For the genus *Gandanameno*, DNA specimen codes are substituted for taxonomic name.

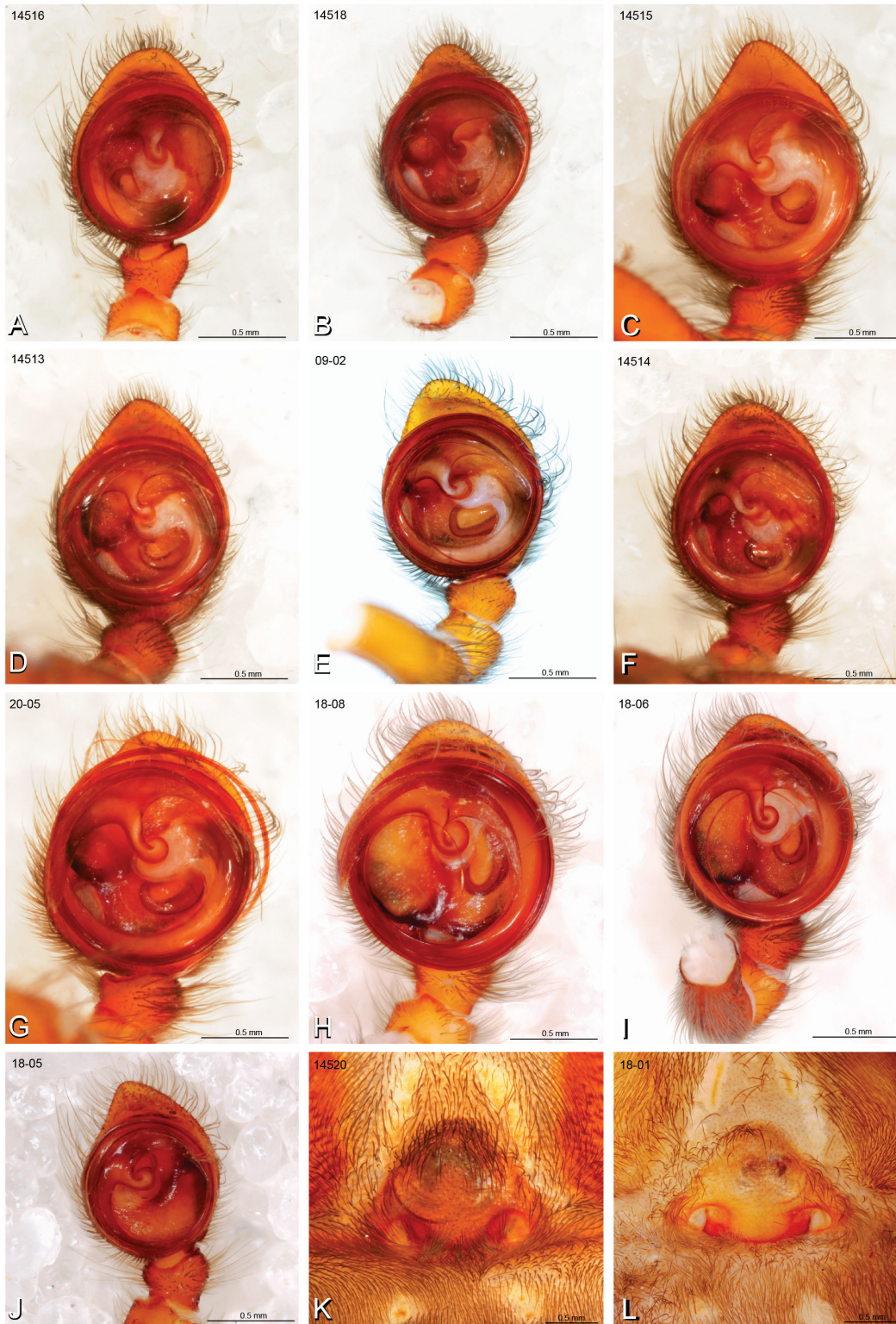


Figure S2. Light micrographs of copulatory organs from *Gandanameno* specimens used in molecular phylogenetic analysis. DNA specimen code appears in the upper left corner of each image. A–J, male palp, ventral view; K–L, epigynum, ventral view. A–J, all shot at a common magnification; K–L, and all images in Fig. S3 shot at a common magnification.

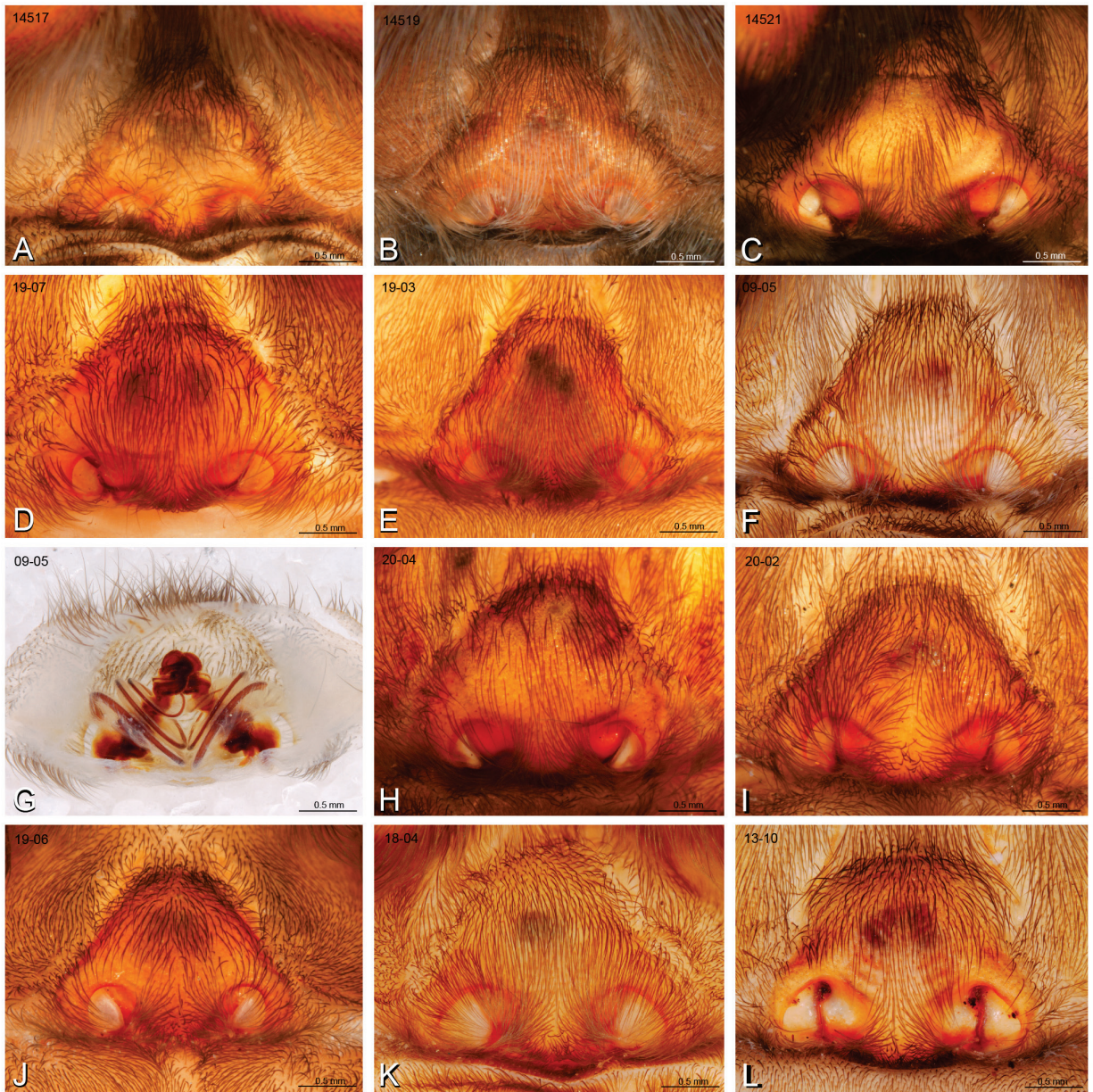


Figure S3. Light micrographs of copulatory organs from *Gandanameno* specimens used in molecular phylogenetic analysis. A–F, H–L, epigynum, ventral view; G, vulva, cleared, dorsal view. Conventions as in Fig. S2.